



STORAGE SPACE SYSTEMS

NEW. Juno tool sheds with flat roof and lounge roof, Juno tool sheds with flat roof and light strip, Juno tool sheds with pent roof





4



14



32

Content

4 Good reasons to try Hörmann

14 Inspirations

16 Juno tool sheds

24 Juno garden boxes

26 Berry tool sheds

30 Berry tool sheds Vario

31 Berry firewood racks

32 Design, equipment, accessories

34 Juno tool sheds

42 Juno garden boxes

44 Berry tool sheds

48 Berry tool sheds Vario

50 Berry firewood racks

55 Foundations

Responsibility for generations

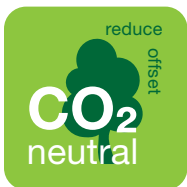
The Hörmann family business has over 90 years of experience as a construction component specialist. This gives us an obligation to both current and future generations. That's why environmental responsibility plays such an important role for us. With this in mind, we develop innovative solutions for sustainable products and intelligent environmental protection.



“A GOOD REPUTATION MUST BE EARNED.”

August Hörmann

In keeping with the tradition started by the company's founder, the Hörmann brand is a true promise of quality and, with sales of over 20 million doors, door frames and operators, is one of Europe's most successful suppliers. Due to the comprehensive international sales and service network, Hörmann is your strong partner for high-quality construction components.



WE THINK AND ACT GREEN. As a family business, we are very conscious of our responsibility to future generations and offer all products for residential construction CO₂-neutral as standard. The Hörmann sustainability strategy aims to reduce and avoid emissions. We cover 100% of our electrical power needs at all European production sites with genuine green electricity from renewable sources. We also apply many other measures to reduce our consumption and save more than 75000 tonnes of CO₂ each year. We work with ClimatePartner to offset the remaining emissions by supporting certified climate protection projects.



You can find further information at
www.hoermann.com/sustainability



ClimatePartner
certified product
climate-id.com/XNEBKC



CO₂
measure
reduce
contribute

Brand quality made in Europe

The family-owned company Hörmann offers all important construction components for building and modernisation, including innovative storage systems, from a single source. We manufacture in highly specialised factories using state-of-the-art production technologies. Our employees work intensively on new products, continual further developments and improvements to details. The results are patents and one-of-a-kind products you can depend on.





20-year
warranty*

LONG-LASTING. GUARANTEED. All major storage space system components are developed and manufactured by Hörmann. Endurance tests under real conditions ensure mature series products with Hörmann quality. Thanks to this and uncompromising quality assurance, you receive a 20-year warranty on all Juno garden boxes, Berry tool sheds and Berry firewood racks from Hörmann.

* The complete warranty conditions can be found at: www.hoermann.com

CERTIFIED SAFETY FOR YOU AND YOUR FAMILY. Hörmann storage space systems offer the highest quality and safety. To achieve this, all Berry tool sheds and Berry firewood racks are made of hot-galvanized sheet steel. Without any sharp edges and with high-quality doors, locks and hinges. This provides you and your family with safety during daily use.



The compelling advantages of metal storage space systems

Metal storage systems offer many advantages over a wooden house. They are not combustible and do not warp. Thanks to the hot-galvanized sheet steel, they are low-maintenance and resistant to both weather and mould. The steel used consists of 25% recycled material. The tool sheds, firewood racks and garden boxes are 100% reusable. Another benefit is the convenient clear passage height of almost 2 metres, which makes it easier to enter and is higher than comparable tool sheds from other manufacturers.



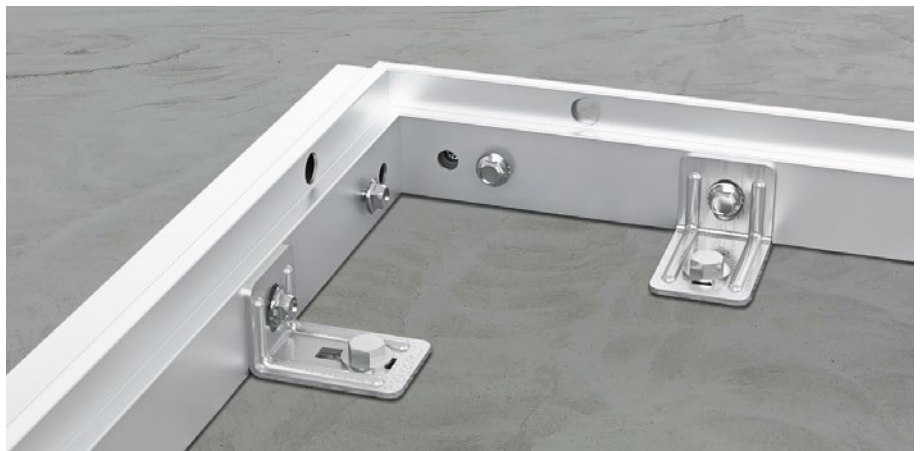
Only from Hörmann
Material thickness up to 1.5 mm

ROBUST CONSTRUCTION. The high stability of the storage space systems is achieved by a robust steel frame construction. Strong material thicknesses of up to 1.5 mm are used for optimum safety and long-lasting quality. All bolts and hinges are galvanized and thus protected against oxidation. The tool sheds are equipped with reliable door locks and high-quality hinges as standard. The standard profile cylinder in the locking system ensures that you can also store valuables, such as your e-bike, safely and securely.

IN ALL KINDS OF WEATHER. With the door closed and fixed to the foundation, Hörmann tool sheds can withstand wind speeds of up to 150 km/h and a snow load of 150 kg/m².

Only from Hörmann
With standard aluminium base frame for Berry tool sheds and firewood racks

Fastening the Berry aluminium floor frame profile to a concrete foundation (anchoring example)



Fixing the Berry aluminium bottom frame profile to uneven ground with screw foundation



COVER PAGE. Juno tool shed flat roof with lounge roof, design motif, RAL 7016 anthracite grey

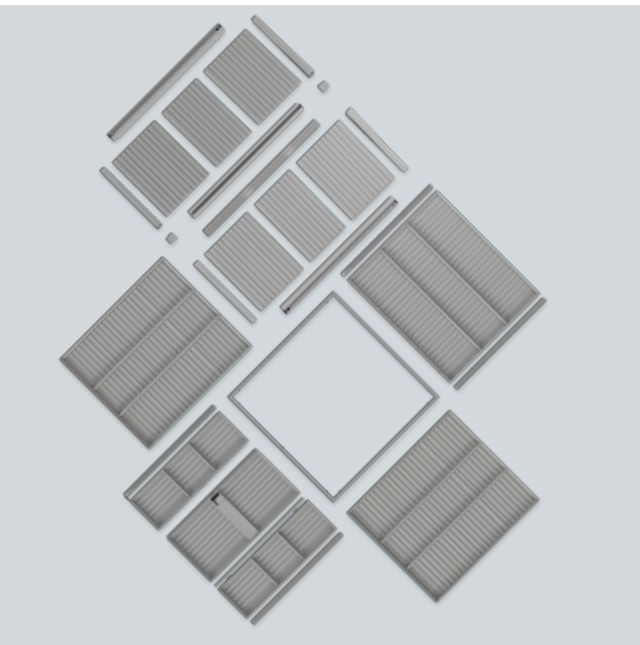
PAGE 2. Juno tool shed flat roof, Modern motif, RAL 7016 anthracite grey

LEFT. Juno tool shed gable roof, Modern motif, RAL 7016 anthracite grey

With great attention to detail

All Hörmann storage space systems are developed with attention to details and everyday functionality. Thanks to the high quality and robust construction, you will enjoy your tool shed, firewood rack or your garden box from Hörmann for a long time. Treat yourself to the wide range of storage space systems and matching comfort down to the last detail.





Only from Hörmann
Quick and easy fitting

QUICK AND EASY FITTING. All Berry storage space systems are delivered with a maximum degree of prefabrication. The appropriate tools are also included in the scope of delivery. This makes for quick and easy assembly and fitting.

→ Further information can be found starting on page 54.



MATCHING PERFECTLY. For a uniform and harmonious appearance, the Berry firewood racks and Berry tool sheds (optionally in RAL to choose), as well as the Juno garden boxes and Juno tool sheds, can be made to match. The Berry firewood racks also match the Berry tool sheds perfectly in terms of height.

HEIGHT-ADJUSTABLE HINGES. All Berry tool shed door hinges are height-adjustable as standard, making it fast and easy to adjust the door.



Only from Hörmann
Concealed hinges
for Juno tool sheds

CONCEALED HINGES. The concealed door hinges of the Juno tool sheds, which connect the door leaf and door frame, are not visible from the outside and ensure a harmonious appearance.

Hörmann Juno and Berry tool sheds

With the Juno and Berry tool shed series, there is a suitable solution for every need – whether maximum design freedom or quick fitting with well thought-out equipment. Both series stand for quality, durability and modern design, but differ in their construction and equipment options.





Juno tool sheds

Modern design with concealed hinges

- 3 colours as standard
- No RAL to choose
- 14 sizes gable roof, 11 sizes pent roof, 11 sizes flat roof
- Light strip, lounge roof or multifunctional profile optional for flat roofs
- Modular fitting
- Optional small and floor-to-ceiling windows
- Single-leaf or double-leaf doors with multiple-point locking
- 3-dimensional, concealed hinges
- Optional aluminium bottom frame
- No roof frame for green roof
- Optional bi-colour exterior
- High-quality coil coating (inside RAL 9002 grey-white)
- 20-year warranty
- Stainless steel lever handle set as standard
- Two drainpipes as standard for pent roofs and flat roofs

→ For further information, see from page 34.



Berry tool sheds

High stability and simple fitting

- 9 colours as standard
- RAL to choose
- 3 sizes gable roof and pent roof, no flat roof
- No light strip, no lounge roof, no multifunctional profile
- Simple and fast fitting
- Optional small windows
- Single-leaf or double-leaf doors with single-point locking
- Height-adjustable hinges
- Aluminium bottom frame included in the price
- Optional roof frame for green roof
- No bi-colour
- Powder-coated, hot-galvanized sheet steel on inside and outside
- 20-year warranty
- Plastic lever handle set as standard
- Optional drainpipes

→ Further information can be found starting on page 44.





Inspirations

- 16 Juno tool sheds with gable roof
- 18 **NEW.** Juno tool sheds with pent roof
- 20 Juno tool sheds with flat roof
- 22 **NEW.** Flat roof with light strip and flat roof with lounge roof and multifunctional profile
- 24 Juno garden boxes
- 26 Berry tool sheds with gable roof
- 28 Berry tool sheds with pent roof
- 30 Berry tool sheds Vario
- 31 Berry firewood racks



TOP LEFT: Motif design, RAL 7016 anthracite grey

TOP RIGHT: Modern motif, RAL 9007 Grey aluminium

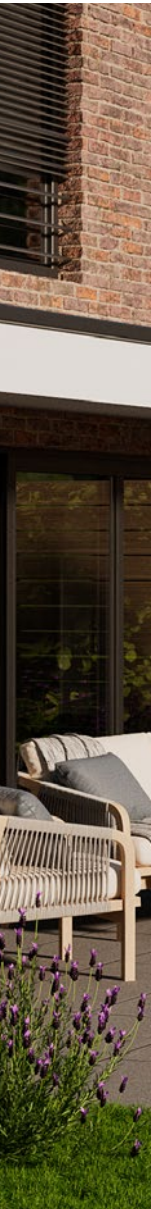
BOTTOM: Modern motif, RAL 9007 Grey aluminium

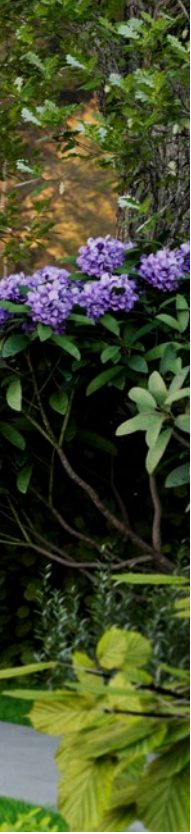
Page 14/15. Berry firewood rack, Modern motif, Juno garden box, Berry tool shed pent roof, Modern motif, all storage systems in RAL 7016 anthracite grey

Juno tool sheds with gable roof

Robust, stylish and versatile - our tool sheds with a classic gable roof offer optimum protection for your garden tools and more. The timeless roof shape blends harmoniously into any environment and ensures reliable stability in all weathers. Quality that impresses – for garden lovers with high standards.

→ For further information, see from page 34.







LEFT. Design motif, RAL 7016 Anthracite grey

RIGHT. Design motif, RAL 9007 Grey aluminium

NEW. Juno tool sheds with pent roof

Compact, modern and well thought-out - our tool sheds with a pent roof offer optimum storage space and an elegant design. The sloping roof shape ensures efficient water drainage and enables space-saving installation directly on the wall. Ideal for style-conscious garden owners with high demands on function and aesthetics.

→ For further information, see from page 34.





TOP LEFT. Motif design, CH 703
Anthracite metallic

TOP RIGHT. Modern style, RAL 7016
Anthracite grey

BOTTOM. Design motif, RAL 9007
Grey aluminium





Juno tool sheds with flat roof

Modern, space-saving and functional – our tool sheds with a flat roof impress with their clean lines and contemporary design. Ideal for small gardens or as a stylish addition to urban outdoor areas. Weatherproof, durable and flexible in use – the perfect solution for your garden tools and more.

→ For further information, see from page 34.

Juno tool sheds with flat roof

NEW. LIGHT STRIP FOR MORE DAYLIGHT.

The elegant light strip between the roof and side walls brings natural light into the tool shed and creates a bright, friendly atmosphere. This not only enhances the appearance of the room – you also save energy and enjoy a pleasant feeling of space in any weather.

→ For further information, see from page 34.

NEW. LOUNGE ROOF WITH MULTIFUNCTIONAL PROFILE FOR MORE COMFORT.

With the optional accessories, your flat roof becomes a stylish oasis of well-being. It not only provides pleasant shade on sunny days, but also reliably protects against rain. So you can enjoy your outdoor moments in complete relaxation – whatever the weather.

→ Further information can be found starting on page 38.



TOP LEFT. Light strip, Modern motif, RAL 7016 Anthracite grey

TOP RIGHT. Light strip, design motif, RAL 9007 Grey aluminium

BOTTOM. Lounge roof, design motif, RAL 9007 Grey aluminium





HIGH-QUALITY STORAGE SPACE FOR BALCONY AND GARDEN.

Sheet steel with high-quality coil coating makes the Juno garden box particularly long-lasting and resistant to both weather and mould. This makes it ideal for storing cushions, toys, garden tools and patio items on the balcony or in the garden.



Juno garden boxes

The standard two-point locking with metal fittings and the cylinder lock integrated in the cover ensure secure protection. Height-adjustable feet and closing dampers as standard provide additional comfort.

→ Further information can be found starting on page 42.

LEFT. RAL 9007 Grey aluminium

RIGHT. RAL 7016 Anthracite grey



Berry tool sheds with gable roof

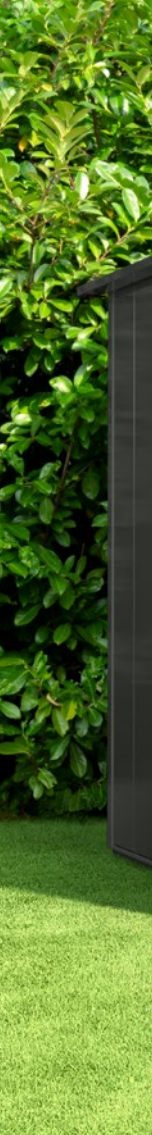
Tradition meets high quality: the classic gable roof gives the tool shed a timeless elegance. Perfect for spacious gardens with character. High-quality materials, stable construction and lovingly designed details ensure long-lasting quality and a harmonious overall appearance.

→ Further information can be found starting on page 44.

TOP. Modern motif, RAL 9007 Grey aluminium

BOTTOM LEFT. Modern motif, RAL 6013 Reed green

BOTTOM RIGHT. Motif Classic Air Plus RAL 7040 Window grey





MOTIVE CLASSIC AIR AND CLASSIC AIR PLUS. The Classic Air and Classic Air Plus Berry tool sheds provide natural ventilation and daylight with their rows of holes at the sides and rear. They are ideal for storing rubbish bins or bicycles. Both styles are available with a pent roof as well as a gable roof.



Berry tool sheds with pent roof

Design meets function: our tool sheds with pent roof combine modern architecture with first-class workmanship. The elegant roof shape ensures optimum water drainage and blends stylishly into sophisticated outdoor areas. High-quality materials, well thought-out details – for all those who value quality and aesthetics.

→ Further information can be found starting on page 44.



TOP LEFT. Modern style, RAL 7016 Anthracite grey

BOTTOM LEFT. Classic Air motif, RAL 7016 anthracite grey

RIGHT. Classic motif, RAL 5014 pigeon blue



Berry tool sheds Vario style

With the new Vario style, you can clad the walls and door sets of the shed yourself and personalise it to your own taste. Whether you opt for timber, laminates or stainless steel expanded mesh, is entirely up to you. The result is a tool shed that is perfectly in tune with the rest of your garden.

→ Further information can be found starting on page 48.

LEFT. Berry tool shed Vario with on-site cladding

TOP RIGHT. Modern style, RAL 7016 Anthracite grey

BOTTOM RIGHT. Classic style, RAL 9007 Grey aluminium



Berry firewood racks

MOTIV MODERN. Protected and ready to hand: The Berry firewood racks are made of hot-galvanized, dimensionally stable sheet steel and are therefore virtually maintenance-free. The practical storage unit is available in two styles and two sizes. The Modern style is characterised by a particularly elegant and contemporary look. It can be used to store wood, protecting it against all adverse weather effects.

MOTIV CLASSIC. Many colours to choose. In addition to the two styles Classic and Modern, Berry firewood racks can be configured in nine standard colours and optionally in RAL to choose. Firewood racks can be optimally matched with Berry tool sheds not only in terms of colour, but also height.

→ Further information can be found starting on page 50.





Design Equipment Accessories

- 34 Overview Juno tool sheds
- 36 Sizes Juno tool sheds
- 38 **NEW.** Lounge roof with multifunctional profile
- 39 Colours Juno storage systems
- 40 Accessories for Juno tool sheds
- 42 Juno garden boxes
- 44 Overview Berry tool sheds
- 46 Sizes Berry tool sheds
- 47 Colours Berry storage systems
- 48 Berry tool sheds Vario
- 49 Green roof Berry tool sheds
- 50 Berry firewood racks
- 52 Accessories Berry storage systems
- 54 Maximum prefabrication
- 55 Foundations

Juno tool sheds

Modern design with concealed hinges

Overview

Gable roof

- 1 Modern style
- 2 Design style

NEW. Pent roof

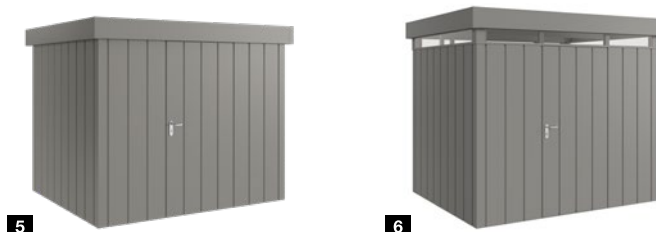
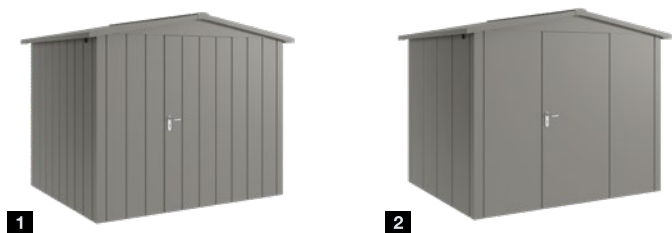
- 3 Modern style
- 4 Design style

Flat roof

- 5 Modern style
- 6 Modern motif with light strip
- 7 Design style
- 8 Motif design with light strip

Lounge roof

- 9 Modern style
- 10 Design style



Foundation

For full stability and safe assembly of Hörmann tool sheds and firewood racks, a horizontal substructure is required.

If a paved, asphalted or concreted, level base surface is not available, we recommend the new screw foundation with ground anchors. This fitting method allows the tool shed to be levelled even when the surface is uneven. It also fulfils the wind load requirements.

→ Further information on the foundation can be found from page 55 onwards.



That speaks in favour of Juno tool sheds:



- Gable roof, pent roof and flat roof
- Flat roof optionally available with light strip, lounge roof or multifunctional profile **1**
- Clearance height and width greater than comparable tool sheds from other manufacturers
- 3 colours as standard
- 14 sizes of gable roof, 11 sizes of pent roof and flat roof and 6 sizes of lounge roof
- 2 styles, “Modern” and “Design”
- Fitting as a modular system – individual 480 mm wall elements
- Wall and roof sheet thickness 0.5 mm
- Stability due to bolted bottom and roof frame with material thickness 1.5 mm
- Optional small windows with 4 mm single-pane safety glass or floor-to-ceiling windows with 4 mm laminated safety glass available
- Doors with multiple-point locking, optionally single-leaf or double-leaf
- Concealed hinges, 3-way adjustable **2**
- Aluminium floor frame optional - fitting with or without floor frame possible
- All edges machined carefully to minimise the risk of injury
- Barely visible bolts
- Wind load* 150 km/h / snow load 150 kg/m²
- Optional bi-colour exterior
- High-quality coil coating (advantage: lighter inside thanks to RAL 9002 Grey white)
- 20-year warranty
- Stainless steel lever handle set as standard
- Two drainpipes as standard for pent roofs and flat roofs
- Mechanical hold-open device as standard **3**

→ Further information on colours can be found on page 39.

→ For more information on accessories, see from page 40.

* An aluminium floor frame with a concrete or screw foundation is required

Juno tool sheds

Sizes



with gable roof

	JSD 1	JSD 2	JSD 3	JSD 4	JSD 5
External dimensions of wall units (width × depth in cm)	166 × 118	166 × 166	214 × 118	214 × 166	214 × 214
Overall height with gable roof (cm)	219	219	223	223	223
External dimensions with gable roof (width × depth in cm)	189 × 133	189 × 181	237 × 133	237 × 181	237 × 229
Element height (cm)	200	200	200	200	200
External foundation dimensions (width × depth in cm)	179 × 131	179 × 179	227 × 131	227 × 179	227 × 227
Internal dimensions of tool shed (width × depth in cm)	157 × 109	157 × 157	205 × 109	205 × 157	205 × 205
External dimensions of base frame (width × depth in cm)	164 × 116	164 × 164	212 × 116	212 × 164	212 × 212
Clearance height tool shed (cm)	195	195	195	195	195
Clear passage width tool shed (single-leaf / double-leaf)	92	92	92 / 140	92 / 140	92 / 140
Gross cubic capacity ²⁾ (m ³)	4,1	5,7	5,3	7,5	9,6
Wind load ³⁾ (km/h)	150	150	150	150	150
Snow load (kg/m ²)	150	150	150	150	150



with pent roof

	JPD 4	JPD 5
External dimensions of wall units (width × depth in cm)	214 × 166	214 × 214
Overall height with pent roof (cm)	224	224
External dimensions with pent roof (width × depth in cm)	229 × 214	229 × 262
Element height (cm)	200	200
External foundation dimensions (width × depth in cm)	227 × 179	227 × 227
Internal dimensions of tool shed (width × depth in cm)	205 × 157	205 × 205
External dimensions of base frame (width × depth in cm)	212 × 164	212 × 212
Clearance height tool shed (cm)	195	195
Clear passage width tool shed (single-leaf / double-leaf)	92 / 140	92 / 140
Gross cubic capacity ²⁾ (m ³)	7,5	9,6
Wind load ³⁾ (km/h)	150	150
Snow load (kg/m ²)	150	150



with flat roof

	JFD 4	JFD 5
External dimensions of wall units (width × depth in cm)	214 × 166	214 × 214
Total height with flat roof (without / with light strip in cm)	220 / 239	220 / 239
External dimensions with flat roof (width × depth in cm)	229 × 181	229 × 229
Element height (cm)	200	200
External foundation dimensions (width × depth in cm)	227 × 179	227 × 227
Internal dimensions of tool shed (width × depth in cm)	205 × 157	205 × 205
External dimensions of base frame (width × depth in cm)	212 × 164	212 × 212
Clearance height tool shed (cm)	195	195
Clear passage width tool shed (single-leaf / double-leaf)	92 / 140	92 / 140
Gross cubic capacity ²⁾ (m ³)	7,4	9,6
Wind load ³⁾ (km/h)	150	150
Snow load (kg/m ²)	150	150

¹⁾ Can only be ordered with single-leaf door

²⁾ Please consult the local building regulations.

³⁾ An aluminium floor frame with a concrete or screw foundation is required

JSD 6	JSD 7	JSD 8	JSD 9	JSD 10	JSD 11	JSD 12	JSD 13	JSD 14
-------	-------	-------	-------	--------	--------	--------	--------	--------

214 × 262	214 × 310	262 × 166	262 × 214	262 × 262	262 × 310	310 × 214	310 × 262	310 × 310
223	223	227	227	227	227	231	231	231
237 × 277	237 × 325	285 × 181	285 × 229	285 × 277	285 × 325	333 × 229	333 × 277	333 × 325
200	200	200	200	200	200	200	200	200
227 × 275	227 × 323	275 × 179	275 × 227	275 × 275	275 × 323	323 × 227	323 × 275	323 × 323
205 × 253	205 × 301	253 × 157	253 × 205	253 × 253	253 × 301	301 × 205	301 × 253	301 × 301
212 × 260	260 × 212	260 × 260	260 × 308	308 × 212	308 × 260	308 × 308	308 × 260	308 × 308
195	195	195	195	195	195	195	195	195
92 / 140	92 / 140	92 / 140	92 / 140	92 / 140	92 / 140	92 / 140	92 / 140	92 / 140
11,8	14,0	9,2	11,9	14,6	17,3	14,3	17,5	20,7
150	150	150	150	150	150	150	150	150
150	150	150	150	150	150	150	150	150

JPD 6	JPD 7	JPD 8	JPD 9	JPD 10	JPD 11	JPD 12	JPD 13	JPD 14
-------	-------	-------	-------	--------	--------	--------	--------	--------

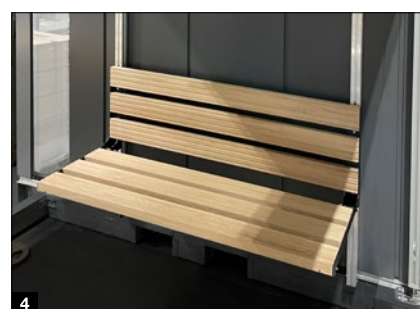
214 × 262	214 × 310	262 × 166	262 × 214	262 × 262	262 × 310	310 × 214	310 × 262	310 × 310
232	232	224	224	232	232	224	232	232
229 × 310	229 × 358	277 × 214	277 × 262	277 × 310	277 × 358	325 × 262	325 × 310	325 × 358
200	200	200	200	200	200	200	200	200
227 × 275	227 × 323	275 × 179	275 × 227	275 × 275	275 × 323	323 × 227	323 × 275	323 × 323
205 × 253	205 × 301	253 × 157	253 × 205	253 × 253	253 × 301	301 × 205	301 × 253	301 × 301
212 × 260	260 × 212	260 × 260	260 × 308	308 × 212	308 × 260	308 × 308	308 × 260	308 × 308
195	195	195	195	195	195	195	195	195
92 / 140	92 / 140	92 / 140	92 / 140	92 / 140	92 / 140	92 / 140	92 / 140	92 / 140
12,0	14,2	9,1	11,8	14,7	14,4	14,0	17,4	20,6
150	150	150	150	150	150	150	150	150
150	150	150	150	150	150	150	150	150

JFD 6	JFD 7	JFD 8	JFD 9	JFD 10	JFD 11	JFD 12	JFD 13	JFD 14
-------	-------	-------	-------	--------	--------	--------	--------	--------

214 × 262	214 × 310	262 × 166	262 × 214	262 × 262	262 × 310	310 × 214	310 × 262	310 × 310
220 / 239	220 / 239	220 / 239	220 / 239	220 / 239	220 / 239	220 / 239	220 / 239	220 / 239
229 × 277	229 × 325	277 × 181	277 × 229	277 × 277	277 × 325	325 × 229	325 × 277	325 × 325
200	200	200	200	200	200	200	200	200
227 × 275	227 × 323	275 × 179	275 × 227	275 × 275	275 × 323	323 × 227	323 × 275	323 × 323
205 × 253	205 × 301	253 × 157	253 × 205	253 × 253	253 × 301	301 × 205	301 × 253	301 × 301
212 × 260	212 × 308	260 × 164	260 × 212	260 × 260	260 × 308	308 × 212	308 × 260	308 × 308
195	195	195	195	195	195	195	195	195
92 / 140	92 / 140	92 / 140	92 / 140	92 / 140	92 / 140	92 / 140	92 / 140	92 / 140
11,7	13,9	9,1	11,7	14,4	17,0	13,9	17,0	20,1
150	150	150	150	150	150	150	150	150
150	150	150	150	150	150	150	150	150

NEW. Lounge roof with multifunctional profile

For Juno tool sheds with a flat roof



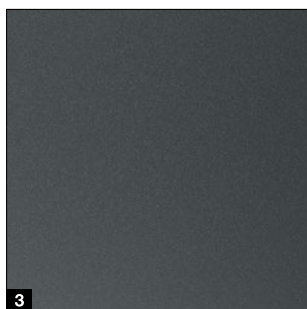
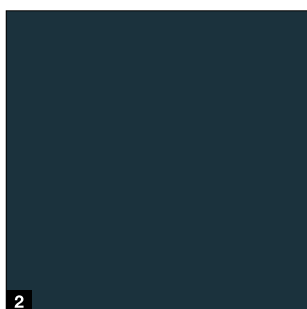
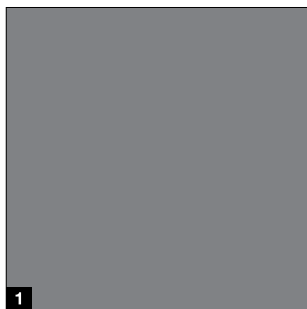
That speaks in favour of the lounge roof:

- Lounge roofs **1** optionally available and retrofittable
- Available in 6 sizes: 2 widths and 3 depths
- Robust design made of galvanized, high-quality painted sheet steel
- Weatherproof, rainproof and UV-resistant thanks to high-quality coil coating
- Additional options for attaching seating or curtains to the multifunctional profile, for example **2**
- Compatible with optional Alukon Ziptex curtain **3**
- Optional on-site bench seat solution **4**

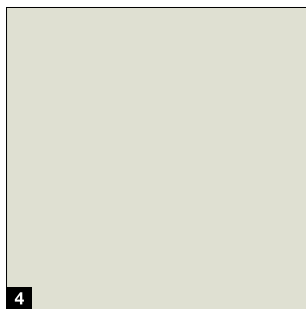
Lounge roof versions

Size designation	External dimensions (W x D in cm)
JFD 5, JFD 9, JFD 12	310 x 210
JFD 6, JFD 10, JFD 13	310 x 260
JFD 7, JFD 11, JFD 14	310 x 310
JFD 5, JFD 9, JFD 12	210 x 210
JFD 6, JFD 10, JFD 13	210 x 260
JFD 7, JFD 11, JFD 14	210 x 310

Exterior colours



Interior colour



Exterior colours

- 1 RAL 9007 Grey aluminium
- 2 RAL 7016 Anthracite grey
- 3 CH 703 Anthracite Metallic

Interior colour

- 4 RAL 9002 Grey white

* not available for Juno garden boxes

Bi-colour

- Roof and door sets optionally in a different colour



Accessories for Juno tool sheds

For exterior

All Juno tool sheds can be easily and individually expanded both on the inside and outside. With our practical accessories, you can customise the tools shed according to your wishes.

Only from Hörmann
Real laminated safety glass 4 mm for full-length windows



Juno drainpipe 5.5 x 5.5 cm (set of 2) incl. fixing set - standard for pent roof and flat roof versions

Variant 1: drainpipe standard set



Juno hose set 1 1/4" (set of 2 units) incl. fixing kit



Floor threshold ramp¹⁾ (inside/outside) incl. bolts

Single-leaf tool sheds: 105 cm
Double-leaf tool sheds: 151 cm



Glazing with single-pane safety glass 4 mm
Glazing frame made of plastic, black
Width x height: 35 x 26 cm



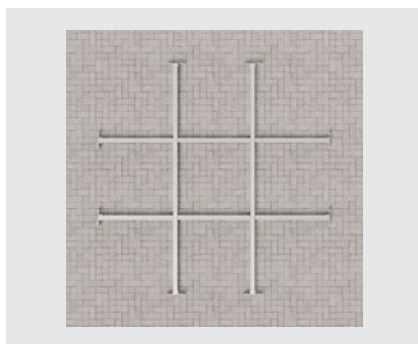
Full-length glazing with laminated safety glass 4 mm
Frameless glazing
Width x height: 27 x 196 cm



Leaf cover
Size: from 9 x 155 cm
(depending on roof type and tool shed size)



Juno aluminium bottom frame incl. fixing material
Dependent on the size of the tool shed



Juno steel base construction for floors incl. fixing material
Dependent on the size of the tool shed



Juno screw foundation²⁾
The screw foundation contains the ground screws. Support brackets, fixing material and the screw-in aid

¹⁾ Floor frame required, when using the floor profiles only the threshold ramp "outside" is possible

²⁾ Additionally required are the floor frame, the base construction floor and the floor (or on-site optionally a 2 cm thick support made of wood, OSB board, screen printing board).

Accessories for Juno tool sheds

For inside



Juno horizontal bicycle rack
Short (width x depth): 48 x 21 cm
Long (width x depth): 96 x 21 cm



Vertical Juno bicycle rack
Length: 190 cm



Juno coat hook
Width x depth x height: 2.7 x 3.6 x 4.5 cm



Juno shelf
Short (width x depth): 48 x 35 cm
Long (width x depth): 96 x 25 cm



Juno fold-up table
Short (width x depth): 70 x 59 cm
Long (width x depth): 98 x 51 cm



Juno device holder
Short (width): 48 cm
Long (width): 96 cm



Juno shelf rail (set of 2 units)
Length: 196 cm



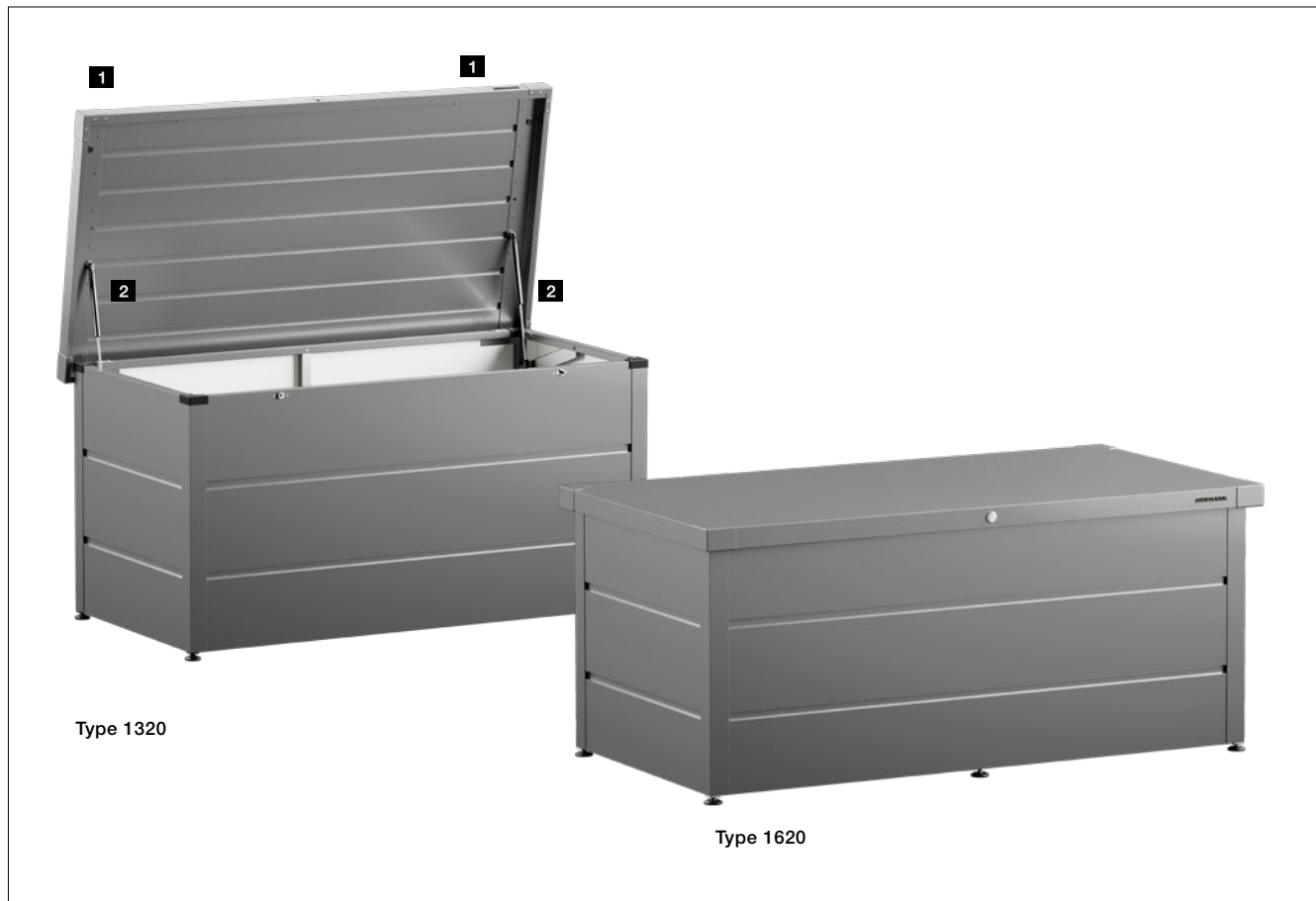
Juno aluminium floor profiles
Note: The aluminium floor frame and the steel base construction for floors are also required.



Electrical panel incl. sockets, LED lighting and optional high-voltage connection
Width x height: 47 x 180 cm

Juno garden boxes

High-quality storage space for balcony and garden



That speaks in favour of Juno garden boxes:

- Safe storage of e.g. cushions, toys, garden and patio utensils
- Robust construction made of galvanized, high-quality painted sheet steel
- Weatherproof, rainproof and UV-resistant
- Cylinder lock elegantly integrated into the cover
- Quick and easy fitting thanks to fewer individual parts
- Individually customisable thanks to height-adjustable feet
- Two-point locking in the cover **1**
- Integrated dampers **2**

→ Further information on colours can be found from page 39 onwards.



Type 1320



Type 1620

Dimensions / technical data

External dimensions with cover
(width × depth × height)

136 × 68 × 73 cm

166 × 88 × 73 cm

Interior dimensions
(width × depth)

123 × 53 cm

153 × 73 cm

Volume

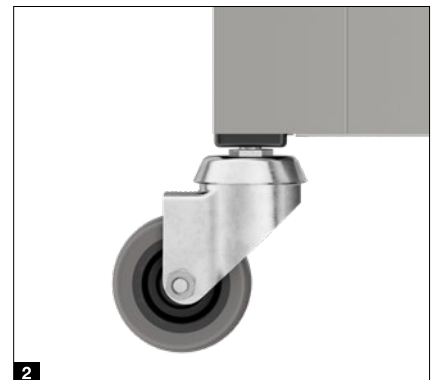
0.4 m³

0.7 m³

NEW. Castors for Juno garden boxes

Advantages:

- Optionally available castors
- 2 castors with brakes **1**,
2 castors without brakes **2**
- Easy fitting



Berry tool sheds

High stability and simple fitting

Overview

Gable roof

- 1 Classic style
- 2 Classic Air style
- 3 Classic Air Plus style
- 4 Modern style
- 5 Vario style

Pent roof

- 6 Classic style
- 7 Classic Air style
- 8 Classic Air Plus style
- 9 Modern style
- 10 Vario style



1



2



3



4



5



6



7



8



9



10

Foundation

For full stability and safe assembly of Hörmann tool sheds and firewood racks, a horizontal substructure is required.

If a paved, asphalted or concreted, level base surface is not available, we recommend the new screw foundation with ground anchors. This fitting method allows the tool shed to be levelled even when the surface is uneven. It also fulfils the wind load requirements.

→ Further information on the foundation can be found from page 55 onwards.



That speaks in favour of Berry tool sheds:



- Gable roof and pent roof
- Clearance height and width greater than comparable tool sheds from other manufacturers
- 9 colours as standard
- RAL to choose
- 3 sizes
- 3 motifs “Classic”, “Modern” and “Vario” (wall and door sets can be customised)
- Quick and easy fitting – high degree of prefabrication thanks to frame construction
- Wall and roof sheet thickness 0.5 mm to 0.65 mm
- Stability due to walls in steel box frame construction – frame parts material thickness 1.5 mm
- With optional small windows in Duratec glazing
- Single-leaf **1** and double-leaf **2** possible
- Height-adjustable hinges
- Aluminium bottom frame included in the price
- Without sharp edges and therefore particularly child-proof
- Barely visible bolts
- Wind load* 150 km/h / snow load 150 kg/m²
- Optional roof frame for green roof
- Powder-coated, hot-galvanized sheet steel on inside and outside
- 20-year warranty
- Plastic lever handle set as standard
- Optional drainpipes

→ Further information on colours can be found on page 47.

→ For more information on accessories, see from page 52.

* A concrete or screw foundation is required

Berry tool sheds

Sizes



with gable roof

	Type 1	Type 2	Type 3
External dimensions of wall units (width × depth in cm)	238 × 108	238 × 238	303 × 238
Overall height with gable roof (cm)	216	216	216
External dimensions with gable roof (width × depth in cm)	258 × 121	258 × 247	323 × 247
Element height (cm)	198	198	198
External foundation dimensions (width × depth in cm)	244 × 114	244 × 244	309 × 244
Internal dimensions of tool shed (width × depth in cm)	226 × 95	226 × 226	290 × 226
External dimensions of base frame (width × depth in cm)	234 × 104	234 × 234	299 × 234
Clearance height tool shed (cm)	194	194	194
Clear passage width tool shed (single-leaf / double-leaf)	96 / 159	96 / 159	96 / 159
Gross cubic capacity ¹⁾ (m ³)	5,2	11,8	15,1
Wind load ²⁾ (km/h)	150	150	150
Snow load (kg/m ²)	150	150	150



with pent roof

	Type 1	Type 2	Type 3
External dimensions of wall units (width × depth in cm)	238 × 108	238 × 238	303 × 238
Overall height with pent roof (cm)	228	232	232
External dimensions with pent roof (width × depth in cm)	247 × 153	247 × 283	312 × 283
Element height (cm)	198	198	198
External foundation dimensions (width × depth in cm)	244 × 114	244 × 244	309 × 244
Internal dimensions of tool shed (width × depth in cm)	226 × 95	226 × 226	290 × 226
External dimensions of base frame (width × depth in cm)	234 × 104	234 × 234	299 × 234
Clearance height tool shed (cm)	194	194	194
Clear passage width tool shed (single-leaf / double-leaf)	96 / 159	96 / 159	96 / 159
Gross cubic capacity ¹⁾ (m ³)	5,5	12,2	15,5
Wind load ²⁾ (km/h)	150	150	150
Snow load (kg/m ²)	150	150	150

¹⁾ Please consult the local building regulations.

²⁾ A concrete or screw foundation is required

Standard colours



- 1 RAL 9007 Grey aluminium
- 2 RAL 9006 White aluminium
- 3 RAL 7040 Window grey
- 4 RAL 7039 Quartz grey
- 5 RAL 7016 Anthracite grey
- 6 RAL 6013 Reed green
- 7 RAL 6005 Moss green
- 8 RAL 5014 Pigeon blue
- 9 RAL 3004 Purple red



RAL to choose
Optionally available at extra cost

Berry tool sheds Vario

For customised design options

Versatile panelling materials

The Vario motif can be combined with different materials such as wood or aluminium as required. This combines the aesthetics of natural wood with the durability of metal. This gives the high functionality a customised design according to your wishes.

The materials available from qualified specialist dealers offer different properties:

- Thermowood* increases durability against moisture and pests
- Tricoya panels* are suitable for use in particularly humid rooms such as saunas or showers
- Aluminium composite panels* are made of either non-combustible Stacbond A2 or fire-resistant Stacbond FR



1 View without infill

2 Thermowood*

3 Tricoya panels*

4 Aluminium composite panels*

* For further information, please contact our sales partner Bertsch Holzbau.

Roof greening for Berry tool sheds

We think green



Generous green roof

A green roof offers a host of advantages for the environment and for the building itself. It improves air quality by filtering pollutants out of the air and producing oxygen. A green roof also reduces the heat effect in built-up urban areas, as it absorbs less heat than conventional roofs. A green roof also absorbs sound and thus reduces noise. It can absorb and filter rainwater before it enters the sewage system, and this helps improve water quality. The green roof also acts as weather protection, against hailstorms for example.



All Berry tool sheds - including those with a gable roof - can be fitted with a roof frame in preparation for a green roof.

The system is rated for a maximum saturated weight of 65 kg/m².



- 1 Berry tool shed with pent roof, modern design, type 3, Anthracite grey RAL 7016
- 2 Detail of roof frame for green roof
- 3 Division of the green roof cassettes
- 4 Roof frame for Berry tool shed with gable roof, Classic motif, type 3, Quartz grey RAL 7039

Berry firewood racks

For safe and dry storage



Modern motif with optional back panel



Classic motif with standard bracing

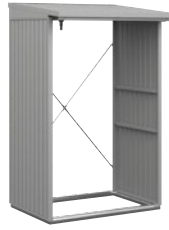
That speaks in favour of Berry firewood racks:

- Wood storage possible in two rows, space for up to 3 cubic metres or 5 bulk cubic metres of wood
- Matching Berry tool sheds to perfection
- Quick and easy fitting thanks to maximum degree of prefabrication
- Stability thanks to steel frame construction and high material thickness
- Two different styles can be selected: Classic and Modern
- Aluminium bottom frame included in the price
- Low-maintenance and weather-resistant
- Without sharp edges and therefore particularly child-proof
- Extremely robust and dimensionally stable

→ Further information on colours can be found on page 47.

Please note:

The firewood racks are available open with cross strut as standard and optionally with a rear wall. The back wall of the firewood racks has the same Classic back wall for both motifs.



Type 1



Type 2

Dimensions / technical data		
External dimensions bottom frame (width × depth)	120 × 81 cm	178 × 81 cm
External dimensions foundation (width × depth)	130 × 91 cm	188 × 91 cm
Internal dimensions firewood rack (width × depth)	113 × 81 cm	171 × 81 cm
External dimensions firewood rack (width × depth)	123 × 103 cm	181 × 103 cm
Door set height	178 cm	178 cm
Overall height	198 cm	198 cm
Volume (without roof)	1.6 m ³	2.5 m ³
Wood storage cubic metres	approx. 2.2 cubic metres	approx. 3.5 cubic metres
Wood storage bulk cubic metres	approx. 3.7 bulk cubic metres	approx. 5.8 bulk cubic metres

Accessories Berry storage systems

For exterior

All Berry tool sheds can be easily and individually expanded both on the inside and outside. With our practical accessories, you can customise the tools shed according to your wishes.



Roof frame for green roof
Gable roof ³⁾ Type 1, 2 and 3
Pent roof type 1, 2 and 3



Leaf cover
Size: from 9 x 155 cm
(depending on roof type and tool shed size)



Stainless steel lever handle set with profile cylinder as standard



Trellis
Size 1: 90 x 190 cm
Size 2: 2 elements with 110 x 190 cm each



Threshold ramp (exterior)
Single-leaf tool sheds: 109 x 4 cm
Double-leaf tool sheds: 172 x 4 cm



Threshold ramp (interior)
Single-leaf tool sheds: 109 x 6 cm
Double-leaf tool sheds: 172 x 6 cm



Ventilation grille
For Berry tool sheds Classic Air and Classic Air Plus motifs Size: 5 x 5 cm



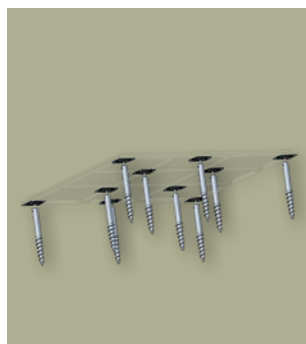
Glazing units with Duratec glazing
Frame in white as standard ¹⁾, optionally in house colour, variants with rung elements possible 28 x 20 cm



Drain hose set ²⁾
Ø 1 1/4", length 190 cm



Drainpipe in RAL colour of tool shed
Ø 40 mm, length 193 cm



Screw foundation Berry ¹⁾
The screw foundation contains the ground screws. Support brackets, fixing material and the screw-in aid



Electric panel incl. sockets and LED lighting, without optional power connection
Width x height: 47 x 180 cm

¹⁾ Additionally required are the floor frame, the base construction floor and the floor (or on-site optionally a 1.8 cm thick support made of wood, OSB board, screen printing board).

²⁾ Compatible with Berry firewood racks

³⁾ from serial number 24241

Accessories Berry storage systems

For inside



Fold-up table set incl. shelf holder set long
 Fold-up table: 70 × 59 cm
 Shelf holder long: length 194 cm (2 units)



Shelf board set incl. shelf holder set short
 Shelf: 67 × 24 cm (2 units)
 Shelf holder short: length 70 cm (2 units)



Corner shelf
 62 × 62 cm



Tool holder¹⁾
 Width 35 cm



Equipment holder set incl. shelf holder set short
 Device holder short: width 48 cm
 Device holder long: width 96 cm



Bicycle rack¹⁾ for bikes up to 40 kg
 Length: 194 cm



Aluminium corrugated sheet floor²⁾
 For tool sheds type 1: 75 × 95 cm (3 units)
 For tool sheds type 2: 75 × 112 cm (6 units)
 For tool sheds type 3: 72 × 112 cm (8 units)
 For firewood racks type 1: 55 × 72 cm (2 units)
 For firewood racks type 2: 56 × 72 cm (3 units)



Steel base construction for floors²⁾
 For tool sheds type 1: 224 × 94 × 4 cm
 For tool sheds type 3: 289 × 224 × 4 cm
 For tool sheds type 3: 289 × 224 × 4 cm
 For firewood racks type 1: 109 × 70 × 4 cm
 For type 2 firewood racks: 168 × 70 × 4 cm



Surface-mounted light with battery and movement detector
 43 × 3.4 × 1.6 cm

¹⁾ Not possible with Berry tool sheds Vario motif
²⁾ Compatible with Berry firewood racks

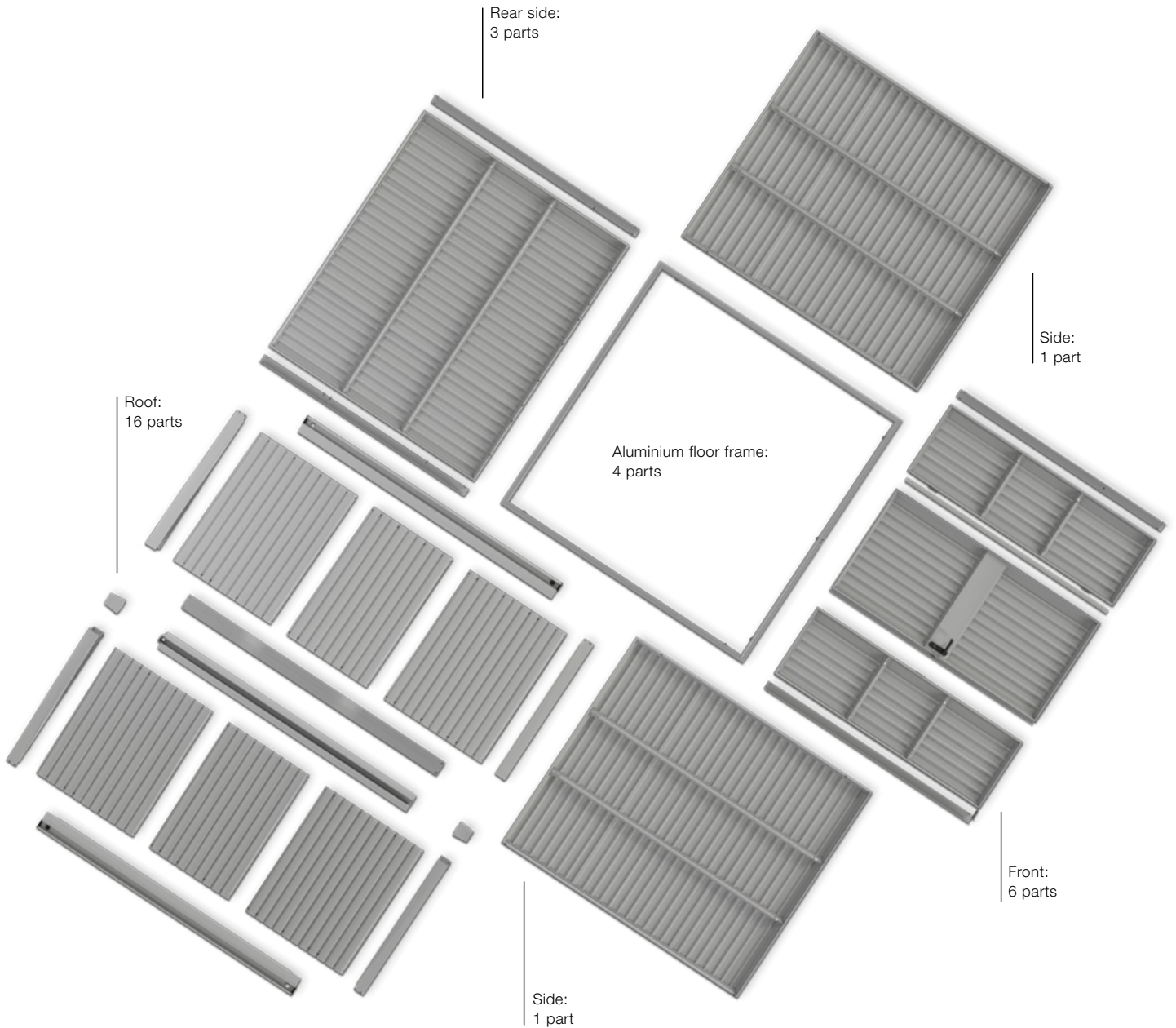
Berry tool sheds

Maximum prefabrication for simple and uncomplicated assembly

With the included tool set, the Berry tool sheds can be assembled quickly and easily. Thanks to a maximum degree of prefabrication and fewer individual parts, you always stay on top of things.

Only from Hörmann

with standard aluminium base frame for Berry tool sheds and Berry firewood racks



Berry tool shed Classic gable roof,
Size: type 2, single-leaf door



Assembly and fastening of the aluminium floor frame to the substrate

Example stone slabs

For full stability and safe assembly of Hörmann tool sheds and firewood racks, a horizontal substructure is required. The storage space systems are fixed and fitted on a paved, asphalted or concreted surface at least the size of the tool shed. If the substructure is not level, this may lead to restrictions in terms of assembly, functionality and safety.

A concrete or screw foundation is required to achieve the wind loads.



Assembly and fastening of the aluminium base construction with screw foundation in the ground

If a paved, asphalted or concreted, level base surface is not available, we recommend the new screw foundation with ground anchors. This fitting method allows the tool shed to be levelled even when the surface is uneven. The plus point: You get more flexibility for remodelling your garden at a later time.

Aluminium floor frame

- 1 Dig out and level the lawn to a depth of approx. 10 cm.
- 2 Lay the paving stones and align them with a spirit level.
- 3 Place aluminium floor frame on top*.
- 4 Fasten to the paving stones with the enclosed angle set (16 units) and bolts.

Aluminium base construction with screw foundation

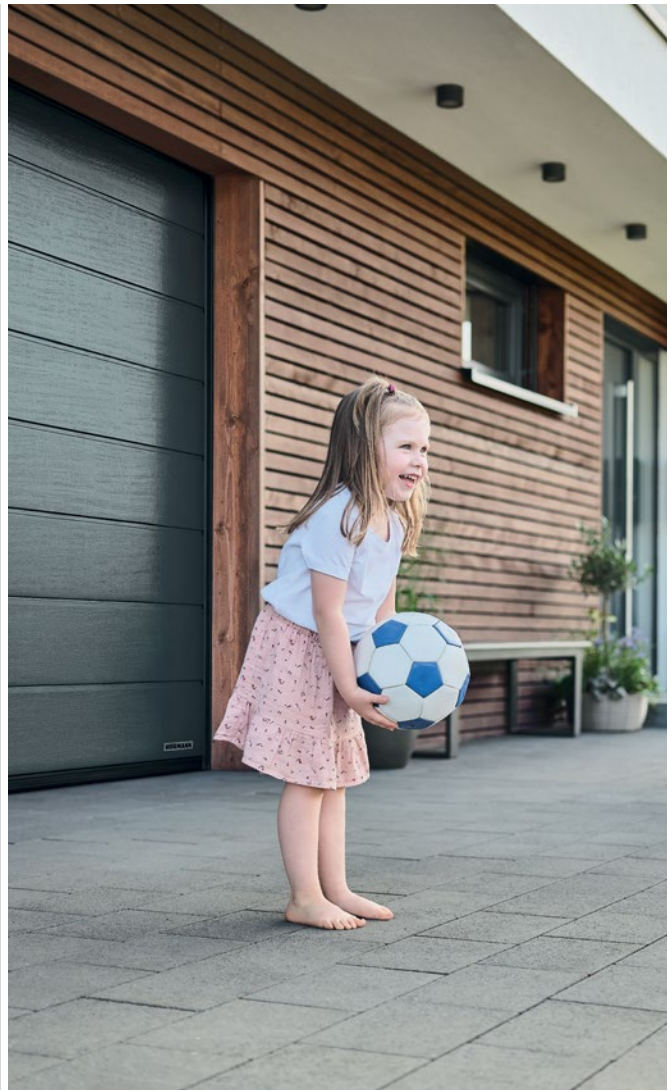
- 5 Fit the aluminium bottom frame to the base construction and position at the planned location.
- 6 First align the 4 outer ground anchors with the bottom frame, then position the remaining ground anchors. A screw-in aid is included in the delivery package as standard.
- 7 Fasten the ground anchor to the base frame and base construction using the mounting plates and brackets.
- 8 Align the individual fixing points using the height-adjustable screw connection for a level, firm foundation.

* Illustration shows aluminium floor frame for Berry tool sheds

Hörmann. For Life.

Whether you are building your home or modernising it, you desire a place full of joy, security and relaxation. Thanks to their sustainable and particularly durable quality, Hörmann products will become a reliable part of your home – made to last for generations.

GARAGE DOORS. GATE AND DOOR OPERATORS. SMART HOME SYSTEMS. ENTRANCE DOORS. RESIDENTIAL INTERNAL DOORS. LOFT DOORS. STEEL DOORS. DOOR FRAMES. STORAGE SPACE SYSTEMS.



Some of the products shown feature special equipment and do not always correspond to the standard versions. The surface finishes and colours shown are subject to the limitations of the printing process and cannot be regarded as binding. All RAL colours are based on the RAL colour chart. All rights reserved. No part may be reproduced without our prior permission. Subject to changes.